

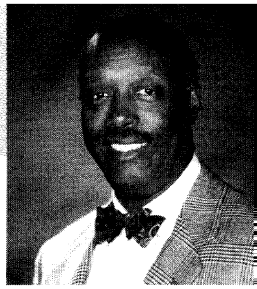
*You are invited to share in an outstanding  
commitment to the future of UWB*

# EAGLES CIRCLE UNIVERSITY OF WASHINGTON, BOTHELL





# WITH YOUR SUPPORT FROM THE CHANCELLOR



Just as the eagles soaring above our campus wetlands inspire us, UWB Eagles Circle members inspire our students and faculty to achieve new heights of academic accomplishment and success. I invite you to become a member of *The University of Washington, Bothell Eagles Circle*, joining others who value excellent higher education opportunities for the citizens of our region.

More than ever, a college degree is essential not only to personal success, but to our nation's economic future. Our mission at UWB is to prepare students to tackle this region's most pressing issues. Toward that goal, our programs focus on educating and developing business leaders, high-tech professionals, quality educators for public schools, top health care professionals, and capable global citizens.

To achieve this mission UWB must:

- Continually expand and improve our programs to meet the higher education demands of an ever-changing region and world.
- Ensure access to higher education for all those who seek to improve their lives and their communities—regardless of their financial situation.
- Attract outstanding scholars to the faculty in each of our five programs.
- Make available the most productive tools for student learning and research.

With an annual gift of \$1,000 or more, you can make a critically important contribution to UWB's continued success and have significant impact on students and faculty. For example, your support can provide an annual scholarship for a student

in nursing or education, two professional fields facing serious shortages and in need of dedicated professionals; or, you can fund crucial faculty-student research to study the decline and restoration of our region's wetland ecosystems.

As an Eagles Circle Member, you not only support the UWB educational mission of excellence, you are also an important part of the University community. Eagles Circle members gather annually with selected faculty and students at the "Eagles Circle Connection" to celebrate the year's achievements and participate in a conversation about UWB's future. With your support, we can continue our legacy of success in working for a better world through education.

—Warren W. Buck, Chancellor

# HOW YOUR GIFT CAN HELP

## EAGLES CIRCLE

*Eagles Circle members provide essential student scholarships, help recruit and retain outstanding faculty, and make collaborative community outreach activities possible.*

### ***Student Scholarships***

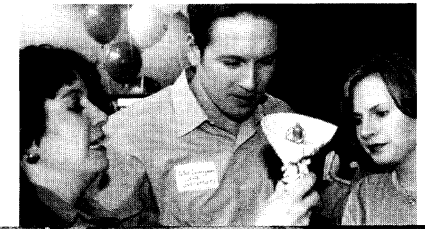
Eagles Circle members create opportunities for students to make the most of their lives. Currently, 80% of our students work, and 40% work full-time, which places a great burden on them. One scholarship recipient recently wrote, "Paying for school is a big obstacle in trying to complete my degree. The extra help goes a long way to alleviate the stress that comes with financing my education." Recent tuition increases make getting an education more challenging than ever. With additional scholarship funds, UWB will be able to reward high achievers, who are committed to their education and have financial need.

### ***Faculty Excellence***

The dollars provided by Eagles Circle members play a vital role in attracting exceptional faculty members who strengthen UWB's reputation for interdisciplinary culture and entrepreneurial spirit. Maintaining this climate of excellence hinges on recruiting and retaining our outstanding faculty, but doing so requires additional private support for research, classroom enhancements, and professional activities. For example, recent Eagles Circle gifts to the MBA Faculty Development Fund enabled faculty and students to attend professional development activities that are essential for their academic and research success.

### ***Community Connections***

Gifts from Eagles Circle members expand UWB's capacity to serve the surrounding communities through student and faculty projects. One example is the Education Program's ROBOLAB, a computer software system and accompanying LEGO building set. This intriguing system, purchased with Eagles Circle contributions, exposes Education students to an exciting tool that teaches middle school children science and math problem-solving skills by creating and programming robots.





# BECOMING A MEMBER

## HOW TO JOIN

*Bothell Excellence Fund*  
*Academic Services*  
*Excellence Fund*  
*Business Associates Fund*  
*Computing & Software Systems*  
*Program Fund*  
*Education Program*  
*Excellence Fund*  
*Liberal Studies Excellence Fund*  
*Masters of Management/MBA*  
*Faculty Development Fund*  
*Nursing Excellence Fund*  
*Nursing Scholarship Fund*  
*Bothell Endowment Fund*  
*Bothell Scholarship Fund*  
*Worthington Scholarship*  
*Endowment*  
*Worthington Distinguished*  
*Teaching Endowment*  
*Worthington Technology*  
*Endowment*

Name(s) \_\_\_\_\_

Address \_\_\_\_\_

Daytime Phone \_\_\_\_\_

Email \_\_\_\_\_

I/We wish to support (*see list at left*): \_\_\_\_\_

in the amount of \_\_\_\_\_.

Enclosed is my/our check.       I/We wish to pay by credit card.

Credit Card # \_\_\_\_\_

Expiration date \_\_\_\_\_

Signature of credit card holder \_\_\_\_\_

I/We wish to pay in installments. Please send a pledge reminder  
 annual       semi-annually       quarterly

I have enclosed a matching gift form from my employer  
(please check with your employer's Human Resources department  
about matching gift programs. You can leverage the impact of your  
gift by using this benefit offered by many companies).

You can also make your gift online.

Go to [www.bothell.washington.edu](http://www.bothell.washington.edu), click on "Giving to UWB"  
and follow the easy links to the secure website.



# MEMBERSHIP BENEFITS

With an annual gift of \$1,000, Eagles Circle members enjoy the following benefits:

- Participation with students and faculty at the “The Eagles Circle Connection,” an annual conversation about the future of UWB.
- Regular written updates regarding campus issues, activities, and future plans.
- Invitations to campus events.
- Annual recognition in UWB publications.
- Knowledge that you are an important part of UWB’s continued growth and success.

In addition to the Eagles Circle membership, donors of \$2,000 or more per year also qualify for the University of Washington President’s Club, receiving recognition in university-wide publications and other benefits.

Contributions to the Eagles Circle are tax deductible as provided by law. For further information, please contact Cyndi Asmus, Director of Development, at 425-352-5220 or [casmus@u.washington.edu](mailto:casmus@u.washington.edu)



**EAGLES CIRCLE**  
UNIVERSITY OF WASHINGTON, BOTHELL

CHANCELLOR'S OFFICE  
Box 358520  
18115 CAMPUS WAY NE  
BOTHELL, WA 98011-8246