

PROFILES



1



2

PROJECT

1

**Pilgrim Rest Missionary Baptist Church**

As part of an urban development project in the Eastlake Park district, the construction of the new Pilgrim Rest Missionary Baptist Church marks the beginning of a new era for one of Phoenix's oldest neighborhoods. Linthicum Constructors, Inc. and CCBG Architects, Inc. have partnered to design and construct the new 31,000-square-foot sanctuary with a seating capacity of 2,000. Pilgrim Rest Missionary Baptist Church was founded in 1922 and currently has more than 2,000 active members. Completion is scheduled for spring of this year. When finished, Pilgrim Rest will showcase a 90-foot tower with three symbolic crosses that will serve as a "beacon" to the surrounding community.

2

**Broadway 101**

Denali National Trust has completed Broadway 101, a multi-tenant office building, located on the southwest corner of Broadway and Price in Tempe. The 160,000-square-foot, twin office buildings have two floors above ground and one level of underground parking. The project, which was completed in January of this year, features pre-built "Insta-Suites" ranging from 2,000 to 7,000 square feet, card-access security system, built-in reception desk with lighted signage area, and a glass-walled conference room. The building also has an on-site deli appropriately named, "Off Broadway Deli." The general contractor for the project was Summit Builders; the architect was Todd & Associates.



3



4



5

3

**Northsight Financial Center**

This 120,000 square foot, multi-tenant office building is currently being constructed by Denali National Trust. Located at the southwest corner of Raintree Drive and Northsight Boulevard, in the Northsight section of the Scottsdale Airpark, the office complex has three floors above ground and two levels of underground parking. The project features pre-built "Insta-Suites" ranging in size from 2,000 to 7,000 square feet, a two-story atrium lobby, and a card-access security system. The office suites feature a balance of private offices and open space. The project is scheduled for completion in June of this year. General Contractor for the project is Summit Builders; architect for the project is Todd & Associates.

4

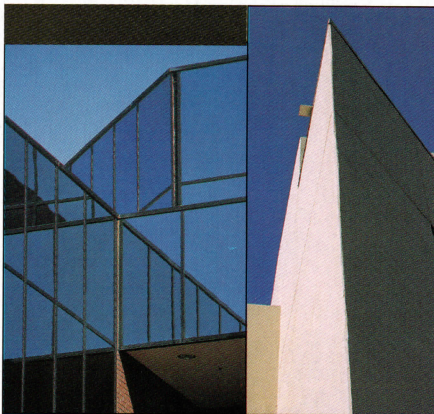
**St. Joan of Arc Church**

Classic gothic design and state-of-the-art technology worked hand-in-hand to produce a gorgeous new St. Joan of Arc Church that Adolfson & Peterson Construction recently completed in Phoenix. The \$3 million sanctuary has a 1,000-seat sanctuary with sloped stone floors, an attached chapel separated by a 48-foot sliding wall, and balcony seating in both areas. The majority of the HVAC was located underground to allow more height for the 40-foot high vaulted ceiling, which is also acoustically balanced to achieve uniform sound throughout the sanctuary. Ornate hand-crafted wood designs complement the stained glass and the sloped marble floor. An extensive lighting system includes sconces, chandeliers, and backlighting for the stained glass.

5

**University of Phoenix, Online**

Bjerk Builders, Inc. have constructed a 75,000-square-foot building on seven acres of the University of Phoenix campus. This "from the ground up" project was specifically designed for University of Phoenix Online and had to be completed within six months. The building is Tilt-up construction and 100 percent air-conditioned office space. Developed by The Hewson Company, the building now houses parts of U of P's administration as well as maintaining and developing the online curriculum for the school. Architect for the project was Will-Hayes Architects, Ltd.



**We  
Leap  
Tall  
Buildings**



Specializing in commercial property management, leasing and financial services.

Carol Kleinberg, RPA  
Designated Broker

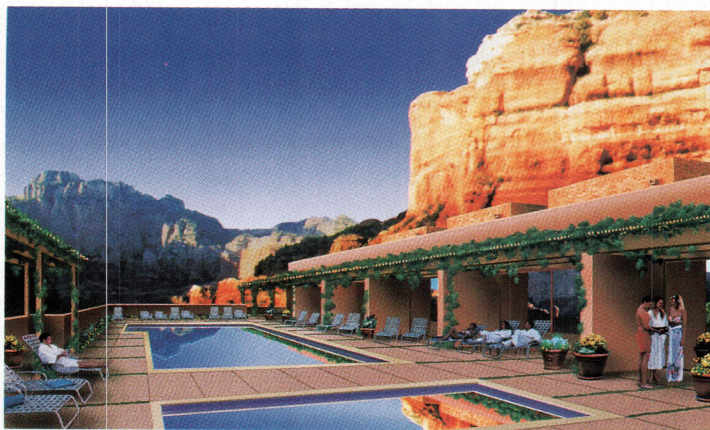


SPV  
Real Estate  
Services Inc

**BOMA TOBY  
Award Winner**

[www.swpv.com/spv](http://www.swpv.com/spv)

7740 North 16th St., Ste. 230  
Phoenix, AZ 85050 ♦ 602 997 8500



6

7



6 **Sedona Enchantment Spa**

**L**inthicum Constructors, Inc. of Scottsdale broke ground on what promises to be the most unique spa of its kind in Arizona, Sedona Enchantment Spa. Tucked deep in the Boynton Canyon, this 28,000-square foot spa will take full advantage of its pristine surroundings. Designs call for 18 treatment rooms, including four massage pavilions outside, and a total of seven bodies of water. Activities will range from healthy cooking demonstrations to tarot readings, crystal baths, and hiking. Working alongside the owner, Sedona Resort Management, the New York architect, Gluckman/Mayner Architects, and the spa consultant, Sylvia Planning and Design, Linthicum plans to open the spa in November 2000.

7 **Target Stores**

**I**n 1995, Adolfson & Peterson Construction began a working relationship with Target stores by completing six pharmacy expansions throughout metro Phoenix. Since that time, A & P has completed five more Target expansions and remodels, averaging 15,000 square feet of space a piece and costing approximately \$2.5 million per store. Those completed stores are scattered through the Valley, and one is located in Albuquerque, New Mexico. Because the stores cannot be closed during the remodeling, A&P crews often work nights and weekends to minimize interference with customers. The relationship between the two companies will continue with Target hiring A & P to remodel two stores in Chandler and Peoria and another in Colorado Springs, Colorado.



8



9



10

8 Phoenix Steinway Hall

**D**&M Rittenhouse Contractors, Inc. recently completed the 16,000-square-foot Phoenix Steinway Hall. The \$1.3 million retail project is a single story building with an exterior shell consisting of a combination of storefronts, stone, masonry and exterior insulation and finishing systems. The building includes steel framing, cast-in-place concrete footings, foundations, built-up roof and mansard roof at building perimeter. The interior work included offices, teaching studios and showroom. D&M Rittenhouse was formed in May 1993 and specializes in commercial office/industrial, recreation and medical projects.

9 Goracing.com

**W**hen Goracing.com leased a new two-story building called Hewson Hohokam Center for their company headquarters, they needed tenant improvements throughout the 65,000-square-foot complex to be completed within 10 weeks of the deal. Bjerk Builders, Inc. met the challenge, and now Goracing.com's Internet-related activities are all housed in a central location. Bjerk's improvements to the building included a large, raised floor computer room with a back-up generator, an Internet radio room where live broadcasts are conducted and a room where race car drivers can come in and hold chat sessions online. Developer for the project was The Hewson Company and the architect was Will-Hayes Architects, Ltd. Goracing.com is a subsidiary of Action Performance Companies, Inc.

10 Charles Schwab

**C**harles Schwab & Company have given Haydon Building Corp. the green light for tenant improvement construction for their new Data and Call Center. The project, developed and owned by DMB Associates, is located at 31st Street and Camelback. Total interior construction of the new building's three floors will approximate 90,000 square feet. The \$7 million project includes a major data and computer center to support the company's regional and national operations. Architects on the project are DMJM Arizona, Inc.